


PARK
TOWN
RESIDENCE



**A DEVELOPMENT RESIDENTS ARE PROUD TO CALL HOME
ONE THAT BOASTS NOT OF QUANTITY BUT QUALITY
WHEREBY “ORIGINALITY & BOLDNESS OF DESIGN” ARE THE DRIVERS**



EXPANSIVE GEOMETRY ENHANCED BY GRADED HUES OF BLUES

Artist's Impression



BEACH AND COASTAL RESORT VIBES

Artist's Impression



A VALLEY IN BETWEEN CASCADING GREENS

Artist's Impression



VALLEY GROVE WHERE PATH MEANDERS TOWARDS A SUNKEN PLAZA

Artist's Impression

T A M P I N E S A V E N U E 1 1

T A M P I N E S N O R T H D R I V E 2

A NARRATIVE OF MOUNTAIN,
LAKES & STREAMS IMBUED WITH
THE HUES OF GREEN & BLUE

Green
Boulevard

PARK
West

PARK
EAST

T A M P I N E S S T R E E T 6 2

PARK
TOWN
RESIDENCE



TAMPINES AVENUE 11

PARK EAST (2ND STOREY)

THE AQUATIC OASIS

- 1 Hydrotherapy Pool
- 2 Aqua Gym
- 3 Wellness Pool
- 4 Sun Lounge
- 5 50m Lap Pool 2
- 6 Poolside Lounge
- 7 Sun Deck 2
- 8 Misty Stream
- 9 Tranquil Pond
- 10 Junior Adventure
- 11 Kid's Water Play
- 12 Aquatic Therapy Lounge
- 13 Changing Room
- 14 Gym 2
- 15 Dance Studio/ Yoga Room
- 16 Function Room 3
- 17 Function Room 4
- 18 Game's Room
- 19 Kid's Function Room 1
- 20 Kid's Entertainment Room
- 21 Kid's Function Room 2
- 22 Changing Room

THE GARDEN OASIS

- 23 Garden Lounge 1
- 24 Garden Lounge 2
- 25 Bean Bag Lounge
- 26 Ginger Grove
- 27 Firefly Trail
- 28 Valley Grove
- 29 Amphitheatre
- 30 Teal Forest
- 31 Grand Lawn 2
- 32 Butterfly Trail
- 33 Co-working Lounge 1
- 34 Music Room
- 35 KTV Room 1
- 36 KTV Room 2

THE ADVENTURE OASIS

- 37 Paws Playground
- 38 Forest Jogging Trail (600m)
- 39 Tennis Court
- 40 Multipurpose Court
- 41 Outdoor Fitness 1

THE LIFESTYLE OASIS

- 42 Lookout Pavilion
- 43 Gastronomy Pavilion
- 44 Reading Pavilion

PARK WEST (2ND STOREY)

THE AQUATIC OASIS

- 45 Chillout Deck
- 46 Massage Jets
- 47 Aqua Terrace
- 48 Cove Pool
- 49 Water Terrace
- 50 Relaxation Pool
- 51 50m Lap Pool 1
- 52 Cabanas
- 53 Sun Deck 1
- 54 Function Room 1
- 55 Function Room 2
- 56 Changing Room
- 57 Gym 1

THE GARDEN OASIS

- 58 Grand Lawn 1
- 59 Flora Garden
- 60 Co-working Lounge 2
- 61 Berry Garden
- 62 Floral Trail

THE LIFESTYLE OASIS

- 65 BBQ Pavilion 1
- 66 BBQ Pavilion 2
- 67 BBQ Pavilion 3
- 68 Gourmet Pavilion
- 69 Culinary Pavilion
- 70 Yoga Pavilion

THE ADVENTURE OASIS

- 63 Putting Green
- 64 Outdoor Fitness 2

ARRIVAL ZONE (BASEMENT 1)

- 74 Drop-Off (Grand Arrival)
- 75 Management Office
- 77 Guardhouse

OTHER FACILITIES

- 71 Genset (2nd Storey)
- 73 Bin Centre (Basement 1)
- Water Tank
- 72 Substation (Basement 1)
- 76 Bicycle Lots (Basement 1)

20
AQUATIC
FACILITIES

8
GARDENS, GROVES,
AND TRAILS

6
DINING
PAVILIONS

6
POOLS

2
LAWNS

3
LIFESTYLE
PAVILIONS

3
DECKS

6
LOUNGES

6
FITNESS
FACILITIES

TAMPINES STREET 62

FACILITIES PLAN



KID'S WATER PLAY & JUNIOR ADVENTURE



GASTRONOMY & READING PAVILLION

Artist's Impression



WIDE EXPANSIVE POOL

Artist's Impression



CASCADING AQUATIC EXPERIENCE

Artist's Impression



50M LAP POOL 1 & SUNDECK 1

Artist's Impression



Disclaimer: While every reasonable care has been taken in preparing this brochure and in constructing the models and showflats, the developer and the marketing agent cannot be held responsible for any inaccuracies or omissions. Visual representations, models, showflat displays and illustrations, photographs, art renderings and other graphic representations and references are intended to portray only artistic impressions of the development and cannot be regarded as representation of fact. Floor areas are approximate measurements and subject to final survey. The property is subject to inspection by the relevant authorities to comply with the current codes of practice. All information, specifications, renderings, visual representations and plans are current at the time of publication and are subject to change as may be required by us and/or the competent authorities' and shall not be regarded as statements or representations of facts. All plans are subject to amendments as directed and/or approved by the building authorities. All areas are approximate measurements only and subject to final survey. The Sales and Purchase Agreement shall form the entire agreement between us, the Developer and the Purchaser and shall supersede all statements, representations or promises made prior to the signing of the Sale and Purchase Agreement and shall in no way be modified by any statements, representations or promises made by us or the Marketing Agent.

1-BEDROOM + STUDY

TYPE AS1

47sqm / 506 sqft

BLK 11 #02-60 to #07-60

BLK 13 #02-69 to #12-69

BLK 17 #02-87 to #12-87

BLK 19 #02-88* to #12-88*

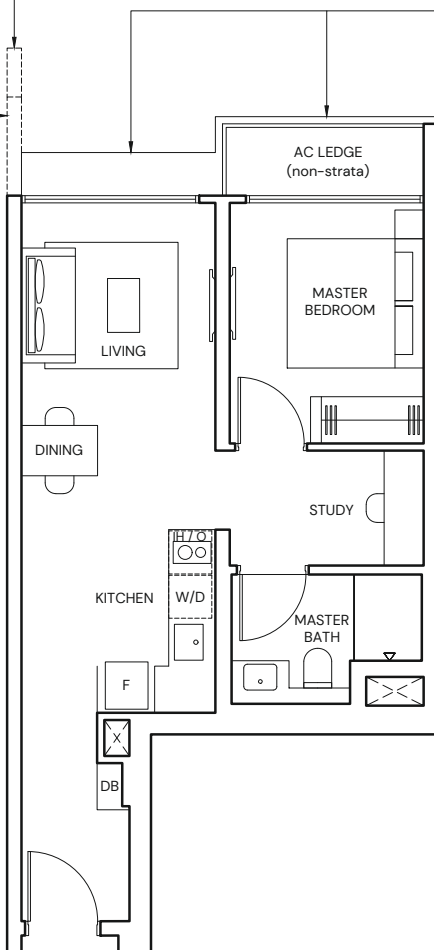
BLK 21 #02-105 to #12-105

BLK 23 #02-114 to #12-114

FIN WALL
APPLICABLE TO UNIT
#02-69 to #12-69

FIN WALL
APPLICABLE TO UNIT
#02-60 to #07-60
#02-87 to #12-87
#02-88* to #12-88*

RC LEDGE
APPLICABLE TO UNIT
#02-60
APPLICABLE AT
3RD STOREY TO 12TH STOREY

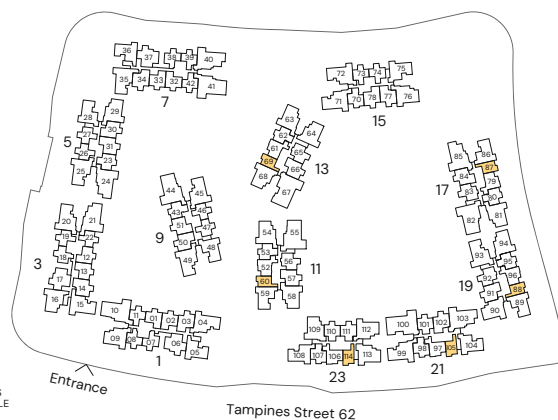


* Mirrored Unit



Area includes Private Enclosed Space (PES) or Balcony, where applicable. All AC ledges and RC ledges (non-load bearing) are excluded from strata area. The plans are subjected to change as may be required by relevant authorities. All areas and measurements stated herein as approximate and subject to final survey.

KEY PLAN IS
NOT TO SCALE



2-BEDROOM

TYPE B3

55 sqm / 592 sqft

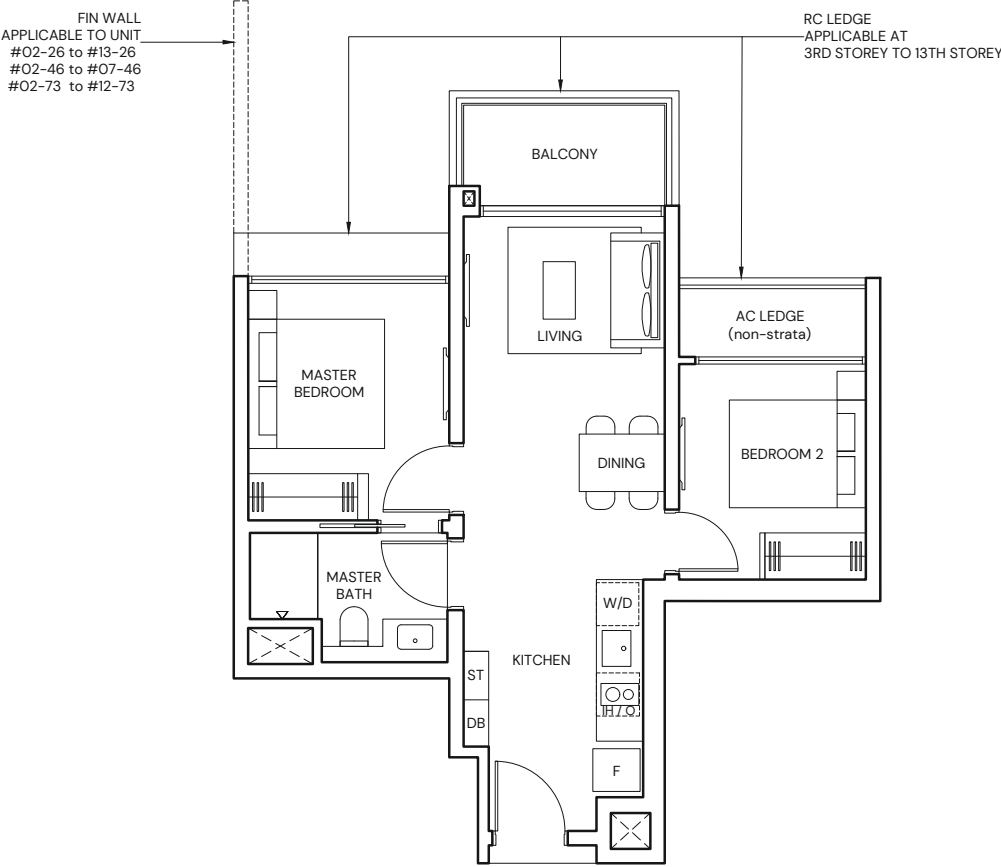
- BLK 5 #02-26 to #13-26

BLK 5 #02-27* to #13-27*

BLK 9 #02-46 to #07-46
- BLK 9 #02-47* to #07-47*

BLK 15 #02-73 to #12-73

BLK 15 #02-74* to #12-74*

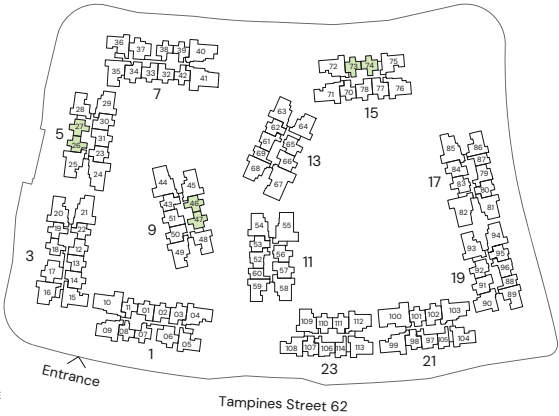


* Mirrored Unit



Area includes Private Enclosed Space (PES) or Balcony, where applicable. All AC ledges and RC ledges (non-load bearing) are excluded from strata area. The plans are subjected to change as may be required by relevant authorities. All areas and measurements stated herein as approximate and subject to final survey.

KEY PLAN IS
NOT TO SCALE



2-BEDROOM PREMIUM

TYPE BP2

63 sqm / 678 sqft

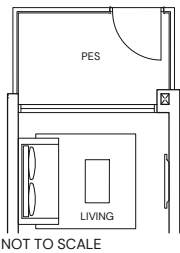
- BLK 1 #03-01* to #12-01*

BLK 1 #03-02 to #12-02

BLK 3 #03-12* to #13-12*
- BLK 3 #03-13 to #13-13

BLK 7 #03-32* to #12-32*

BLK 7 #03-33 to #12-33



TYPE BP2(p)

63 sqm / 678 sqft

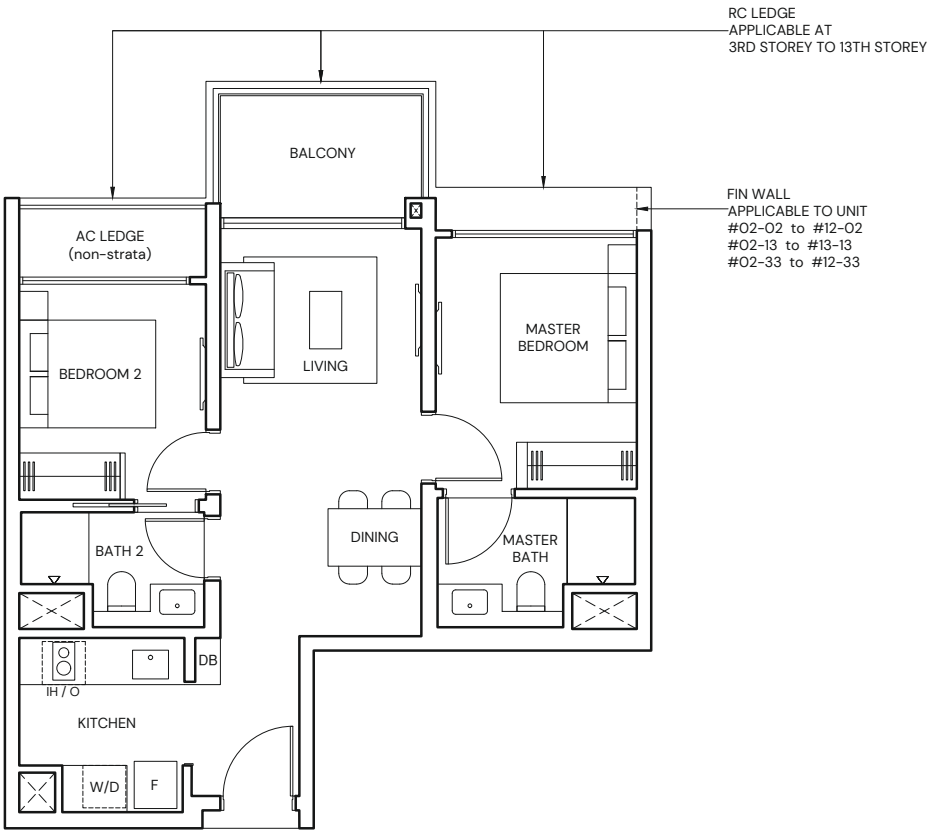
- BLK 1 #02-01*

BLK 1 #02-02

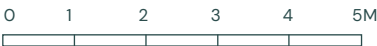
BLK 3 #02-12*
- BLK 3 #02-13

BLK 7 #02-32*

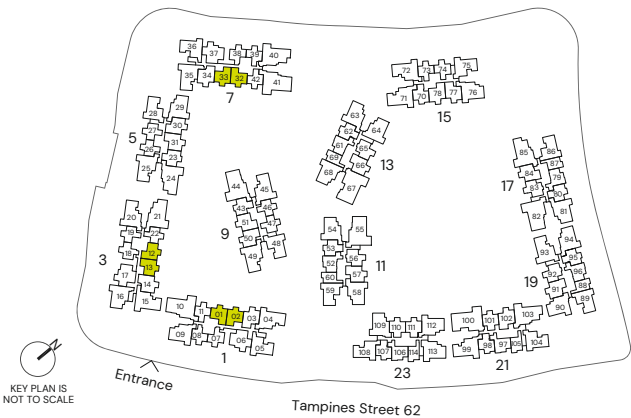
BLK 7 #02-33



* Mirrored Unit



Area includes Private Enclosed Space (PES) or Balcony, where applicable. All AC ledges and RC ledges (non-load bearing) are excluded from strata area. The plans are subjected to change as may be required by relevant authorities. All areas and measurements stated herein as approximate and subject to final survey.



2-BEDROOM PREMIUM + STUDY

TYPE BPS1

71 sqm / 764 sqft

BLK 1 #03-03 to #12-03
BLK 5 #03-30* to #13-30*
BLK 5 #03-31 to #13-31
BLK 9 #03-50* to #08-50*

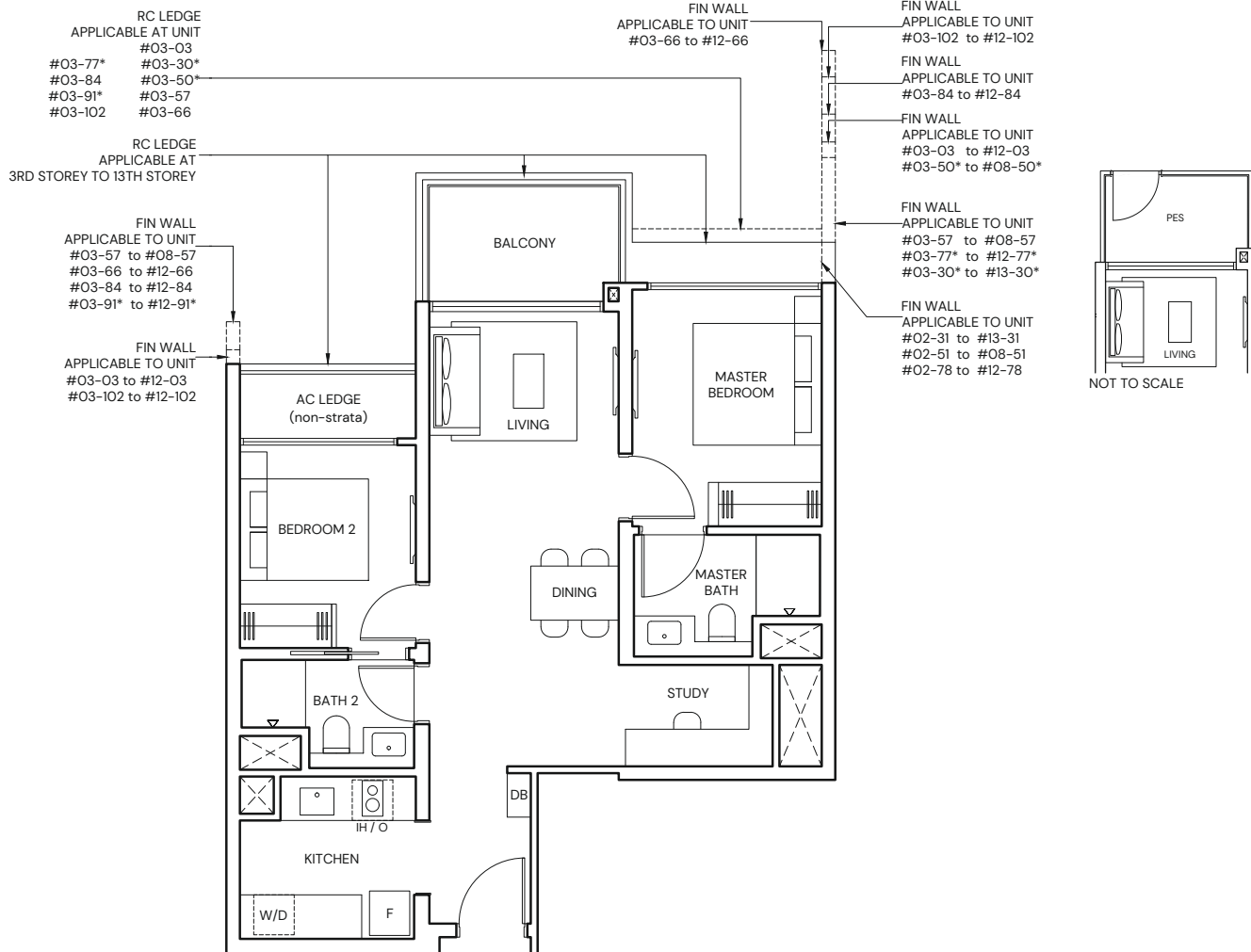
BLK 9 #03-51 to #08-51
BLK 11 #03-57 to #08-57
BLK 13 #03-66 to #12-66
BLK 15 #03-77* to #12-77*

BLK 15 #03-78 to #12-78
BLK 17 #03-84 to #12-84
BLK 19 #03-91* to #12-91*
BLK 21 #03-102 to #12-102

TYPE BPS1(p)

71 sqm / 764 sqft

BLK 5 #02-31
BLK 9 #02-51
BLK 15 #02-78



* Mirrored Unit



Area includes Private Enclosed Space (PES) or Balcony, where applicable. All AC ledges and RC ledges (non-load bearing) are excluded from strata area. The plans are subjected to change as may be required by relevant authorities. All areas and measurements stated herein as approximate and subject to final survey.



3-BEDROOM

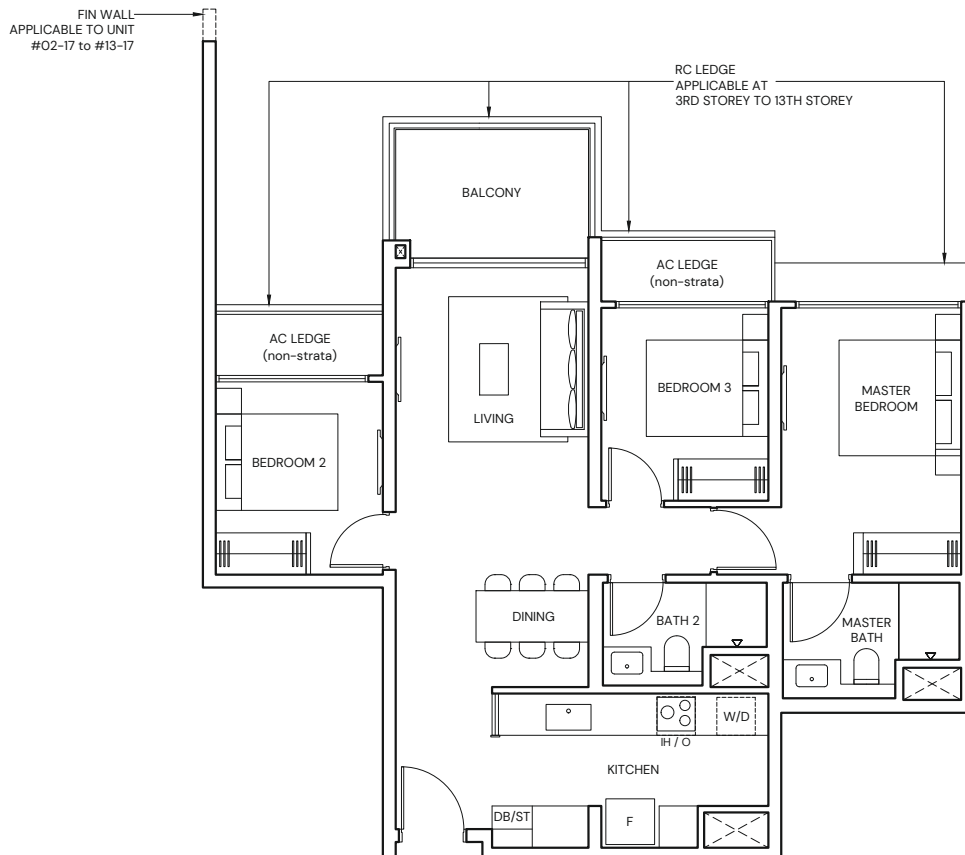
TYPE C1

86 sqm / 926 sqft

BLK 1 #02-06 to #12-06

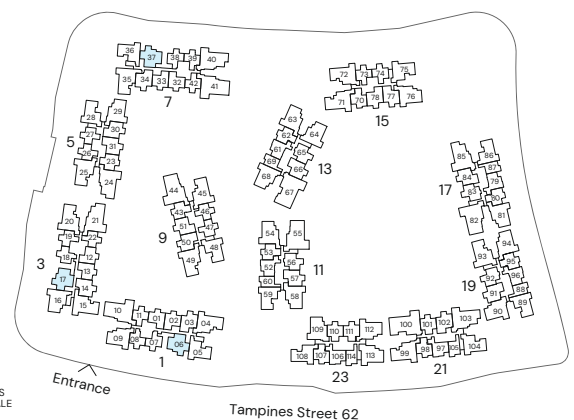
BLK 3 #02-17 to #13-17

BLK 7 #02-37 to #12-37



Area includes Private Enclosed Space (PES) or Balcony, where applicable. All AC ledges and RC ledges (non-load bearing) are excluded from strata area. The plans are subjected to change as may be required by relevant authorities. All areas and measurements stated herein as approximate and subject to final survey.

KEY PLAN IS NOT TO SCALE



3-BEDROOM PREMIUM

TYPE CP1

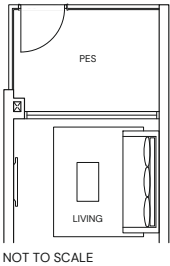
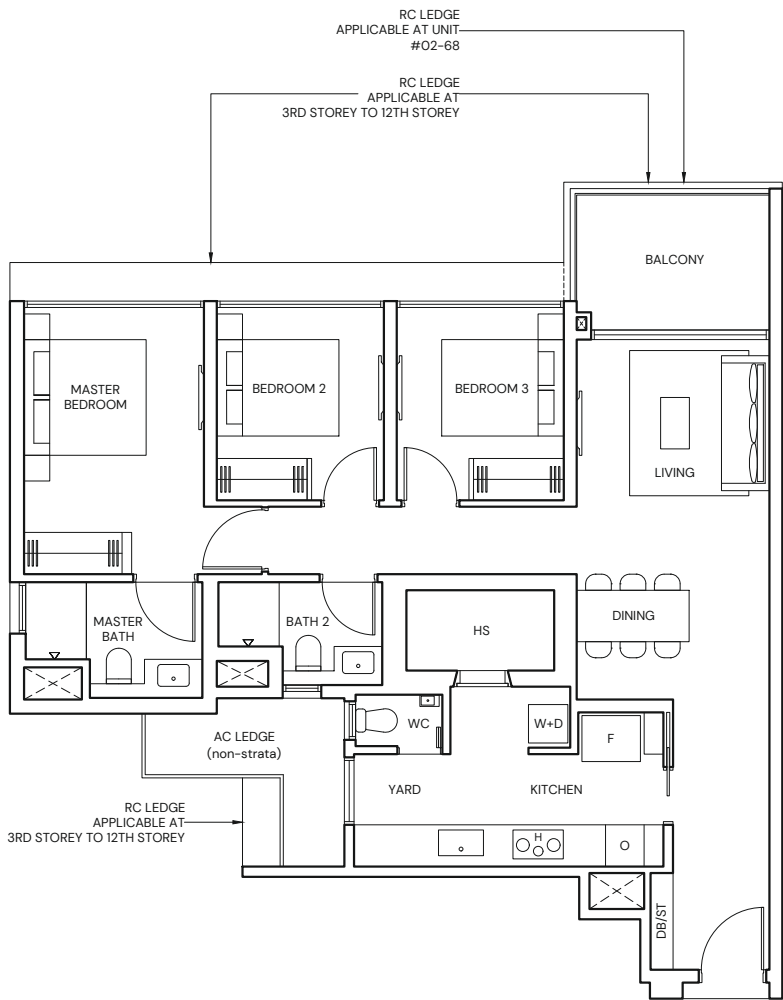
99 sqm / 1066 sqft

BLK 13 #03-64 to #12-64
BLK 13 #02-68 to #12-68

TYPE CP1(p)

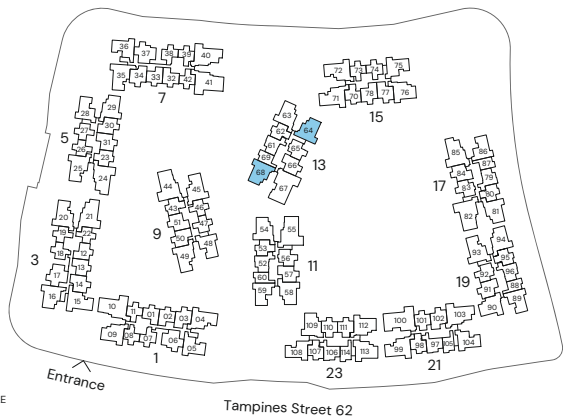
99 sqm / 1066 sqft

BLK 13 #02-64



Area includes Private Enclosed Space (PES) or Balcony, where applicable. All AC ledges and RC ledges (non-load bearing) are excluded from strata area. The plans are subjected to change as may be required by relevant authorities. All areas and measurements stated herein as approximate and subject to final survey.

KEY PLAN IS
NOT TO SCALE



3-BEDROOM PREMIUM + STUDY

TYPE CPS2

108 sqm / 1163 sqft

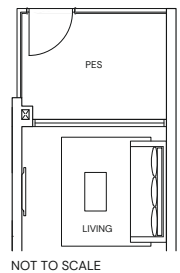
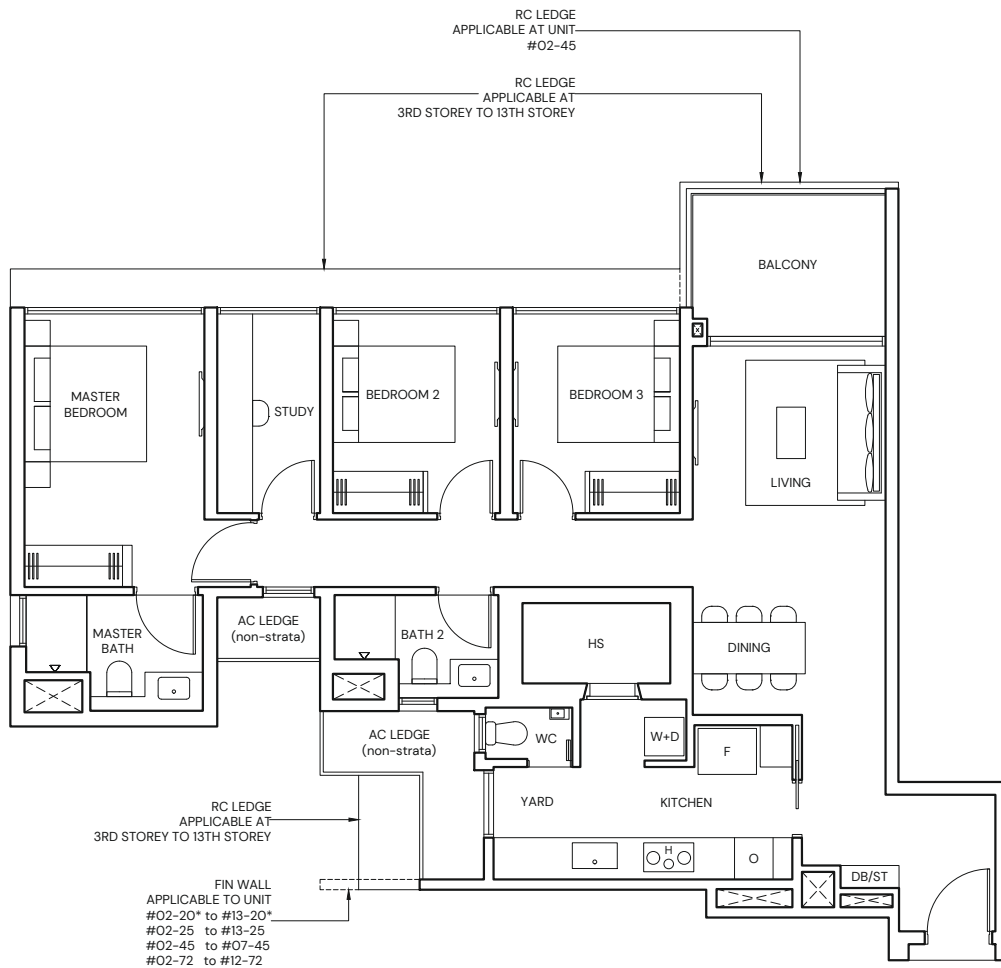
BLK 1 #03-04* to #12-04*
BLK 3 #02-20* to #13-20*

BLK 5 #02-25 to #13-25
BLK 9 #02-45 to #07-45
BLK 15 #02-72 to #12-72

TYPE CPS2(p)

108 sqm / 1163 sqft

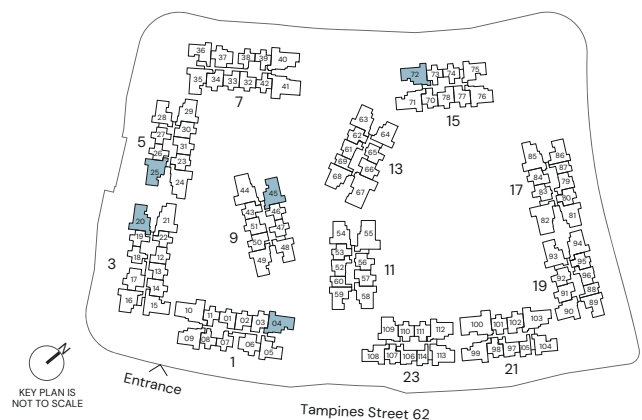
BLK 1 #02-04*



* Mirrored Unit



Area includes Private Enclosed Space (PES) or Balcony, where applicable. All AC ledges and RC ledges (non-load bearing) are excluded from strata area. The plans are subjected to change as may be required by relevant authorities. All areas and measurements stated herein as approximate and subject to final survey.



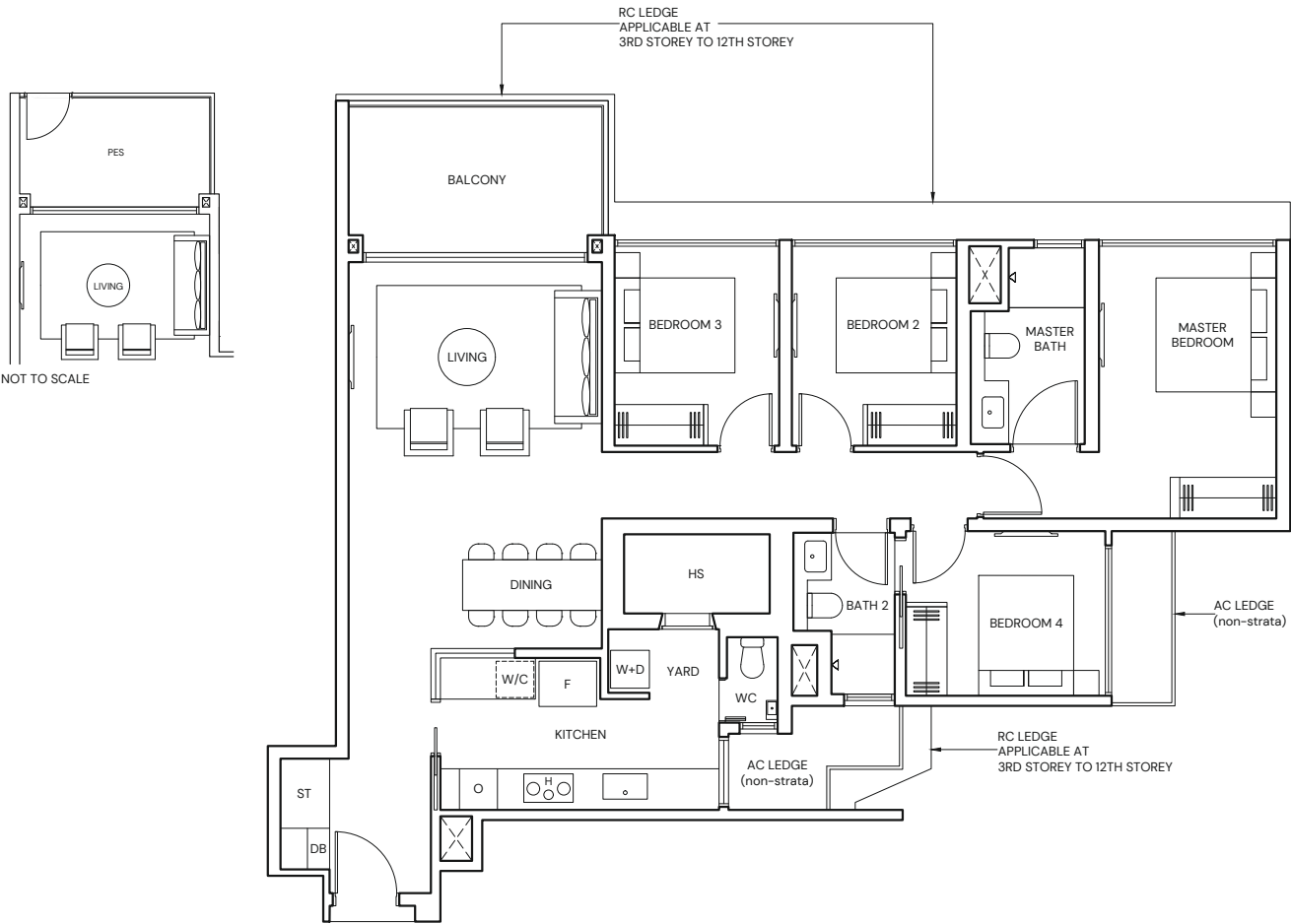
4-BEDROOM

TYPE D1
124 sqm / 1335 sqft

BLK 21 #03-103 to #12-103

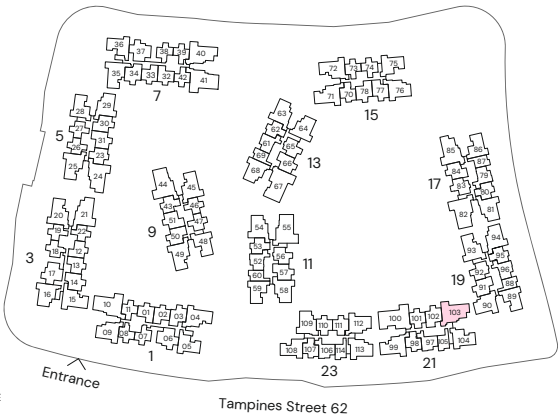
TYPE D1(p)
124 sqm / 1335 sqft

BLK 21 #02-103



Area includes Private Enclosed Space (PES) or Balcony, where applicable. All AC ledges and RC ledges (non-load bearing) are excluded from strata area. The plans are subjected to change as may be required by relevant authorities. All areas and measurements stated herein as approximate and subject to final survey.

KEY PLAN IS
NOT TO SCALE



4-BEDROOM PREMIUM

TYPE DP2

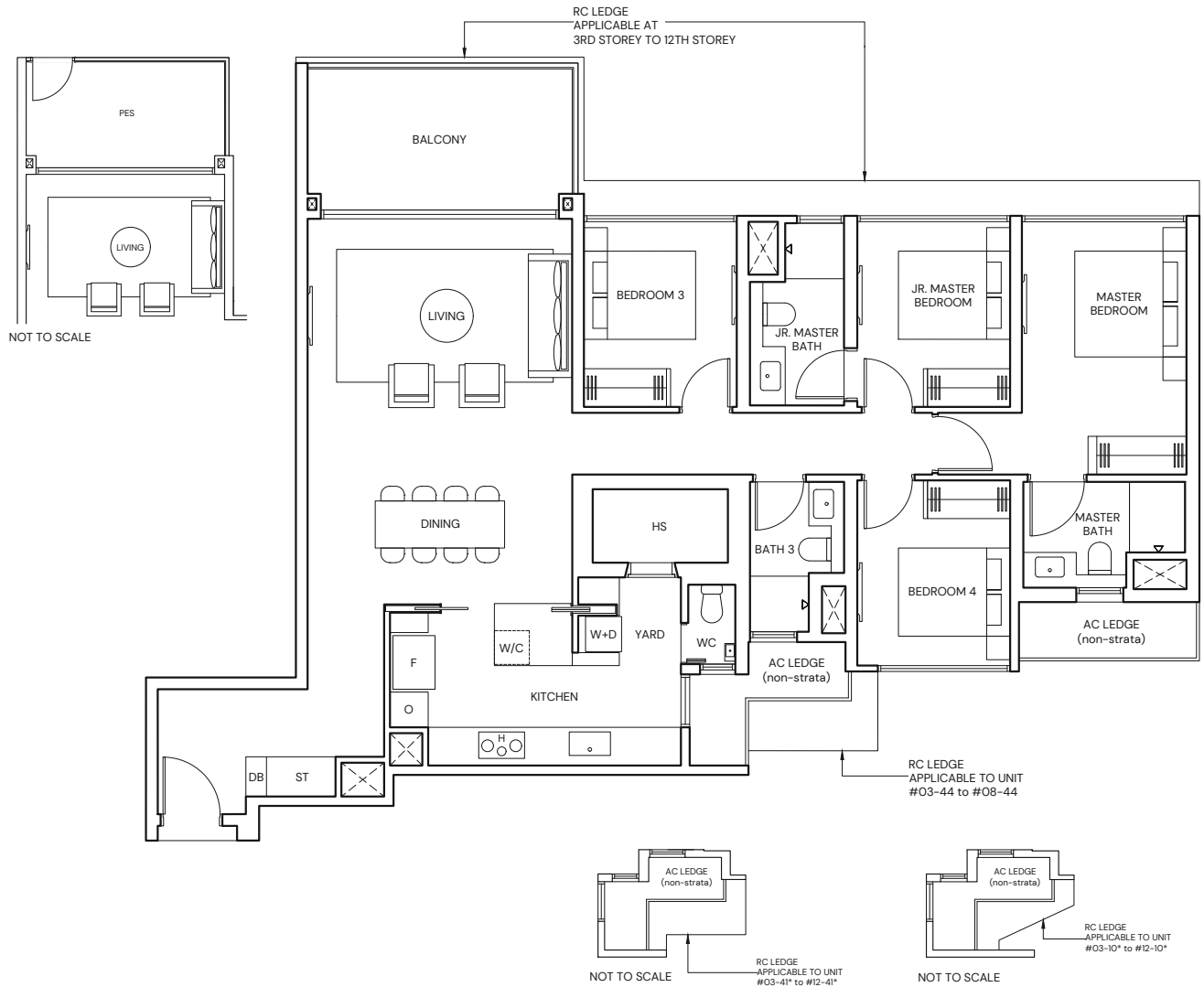
139 sqm / 1496 sqft

BLK 1 #03-10* to #12-10*
BLK 7 #03-41* to #12-41*
BLK 9 #03-44 to #08-44

TYPE DP2(p)

139 sqm / 1496 sqft

BLK 1 #02-10*
BLK 7 #02-41*
BLK 9 #02-44

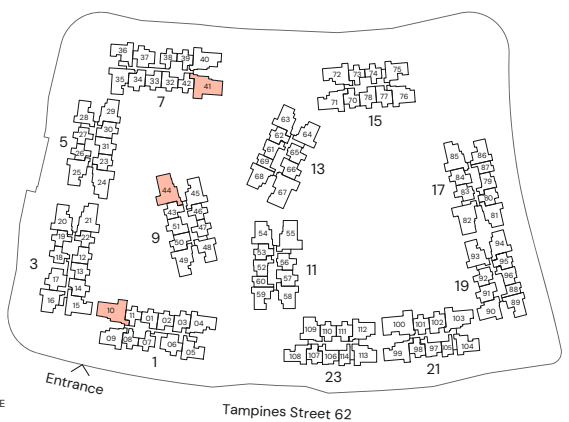


* Mirrored Unit

0 1 2 3 4 5M

Area includes Private Enclosed Space (PES) or Balcony, where applicable. All AC ledges and RC ledges (non-load bearing) are excluded from strata area. The plans are subjected to change as may be required by relevant authorities. All areas and measurements stated herein as approximate and subject to final survey.

KEY PLAN IS NOT TO SCALE



79